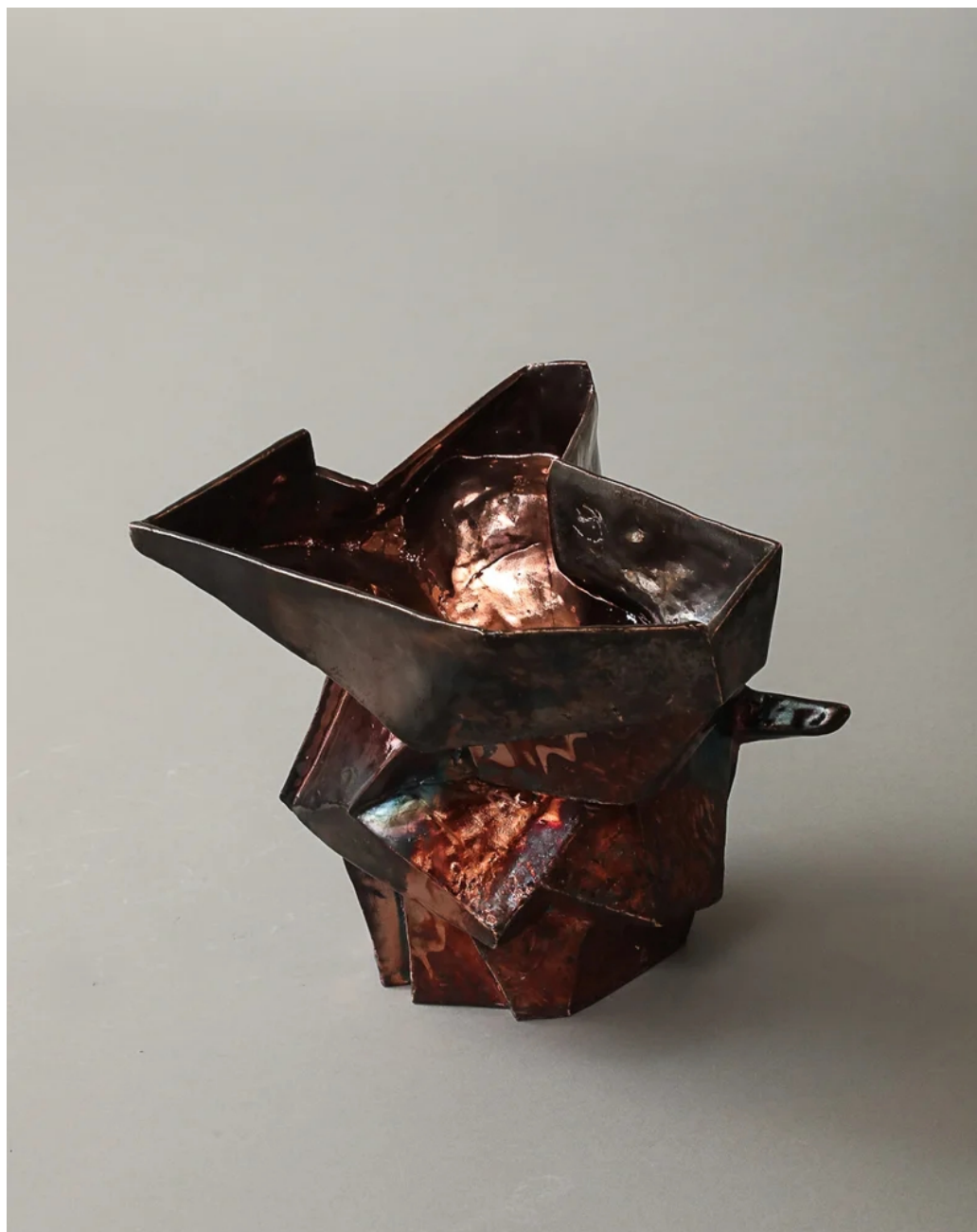




LIZ O'BRIEN

New York



R.A. Pesce

Brutalist Vessel, 2025

Wheel thrown and hand-shaped stoneware raku fired with
reduction fired glaze in iridescent coppery tones

9.5"H x 11"H x 10"D

Signed: *RP*

Ref #CVL_2025



LIZ O'BRIEN

New York

