



LIZ O'BRIEN

New York

Near pair of recumbent, sculpted metal
Nepalese deer atop black marble bases.
19th century
Selected and mounted by Samuel Marx.

Provenance

Mary and Leigh Block, Chicago, IL

Documentation

Liz O'Brien. *Ultra Modern: Samuel Marx Architect, Designer, Art Collector.*

New York: Pointed Leaf Press, 2007. p 188 - 90.

House Beautiful. March, 1947.

Dimensions

16.25"H 12.5"W 4.75"D

Reference #

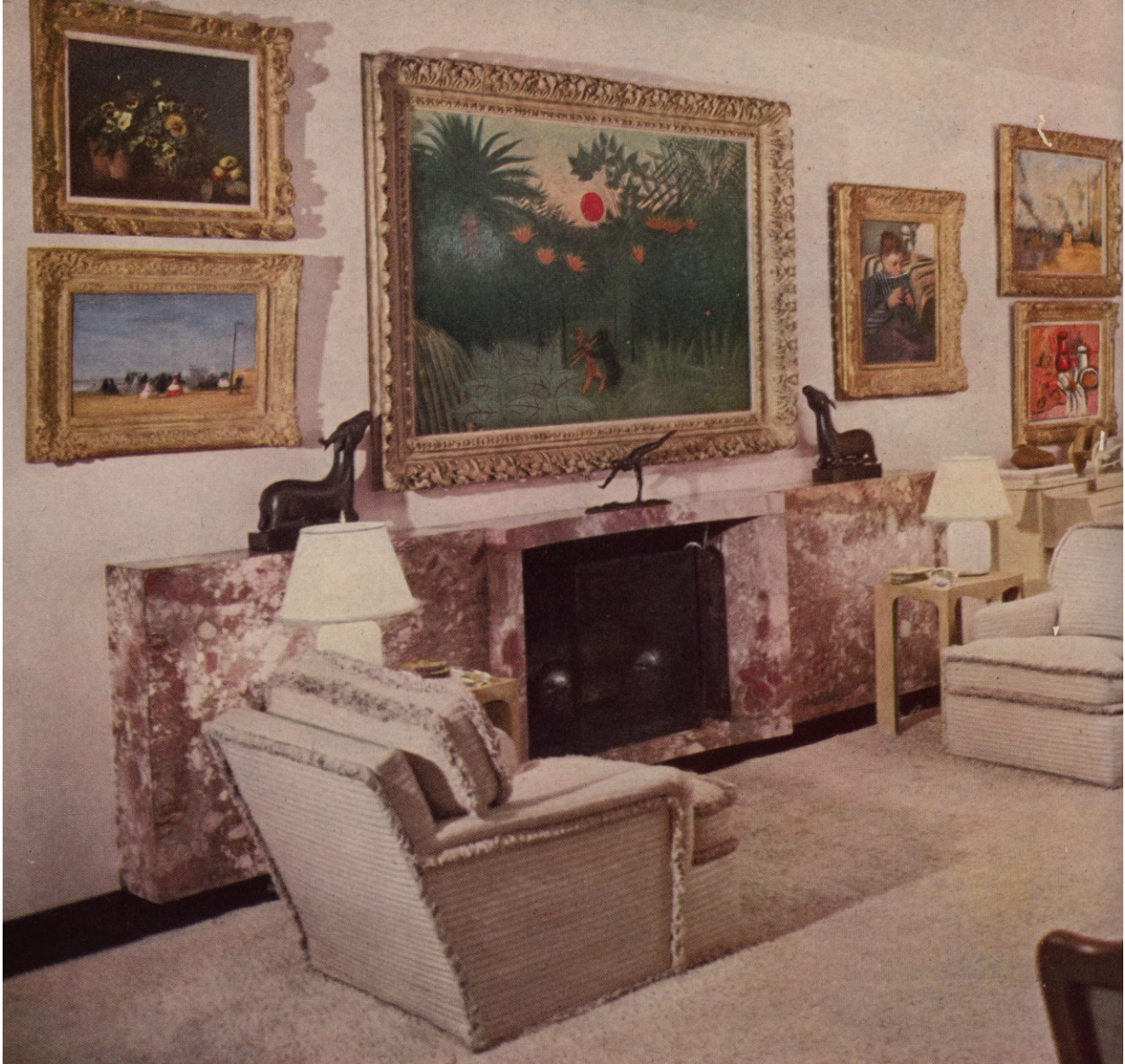
3084





LIZ O'BRIEN

New York



House Beautiful. March, 1947.