

JEAN GARÇON

A pair of stainless steel chairs
with upholstered cushions.
French, c. 1970.

DOCUMENTATION

George and Rosamond Bernier, *EUROPEAN DECORATION*, Reynal and Co.
The Karl Lagerfeld residence, p. 40-41.

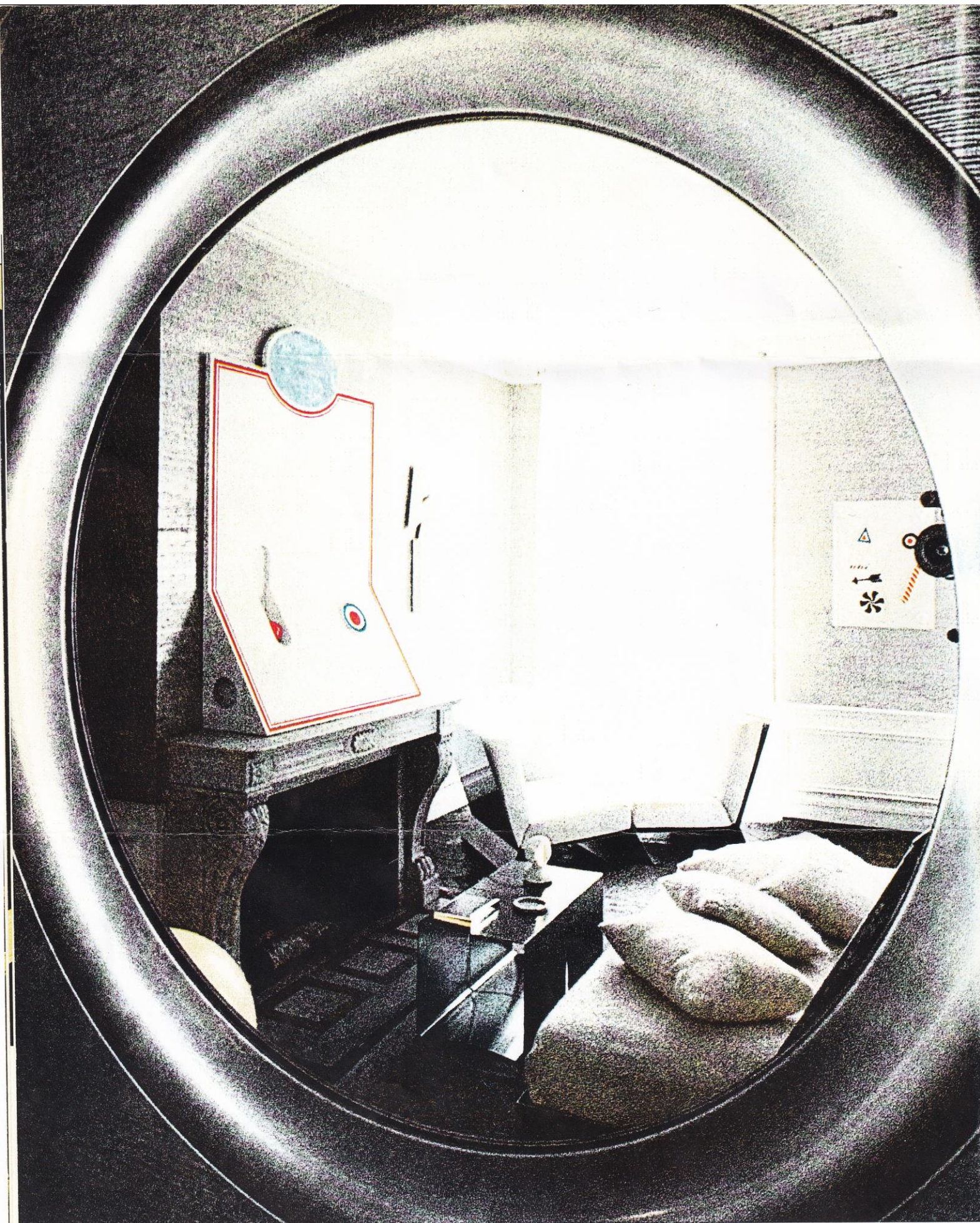
Measurements

Height: 29 ½"

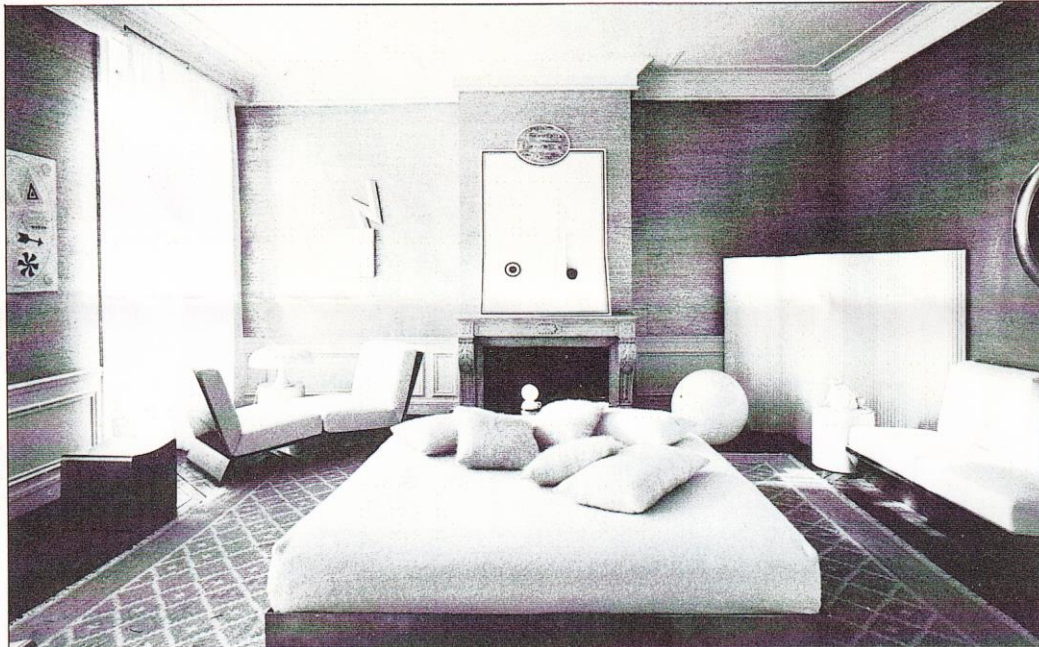
Width: 29 ½"

Depth: 38 ½"



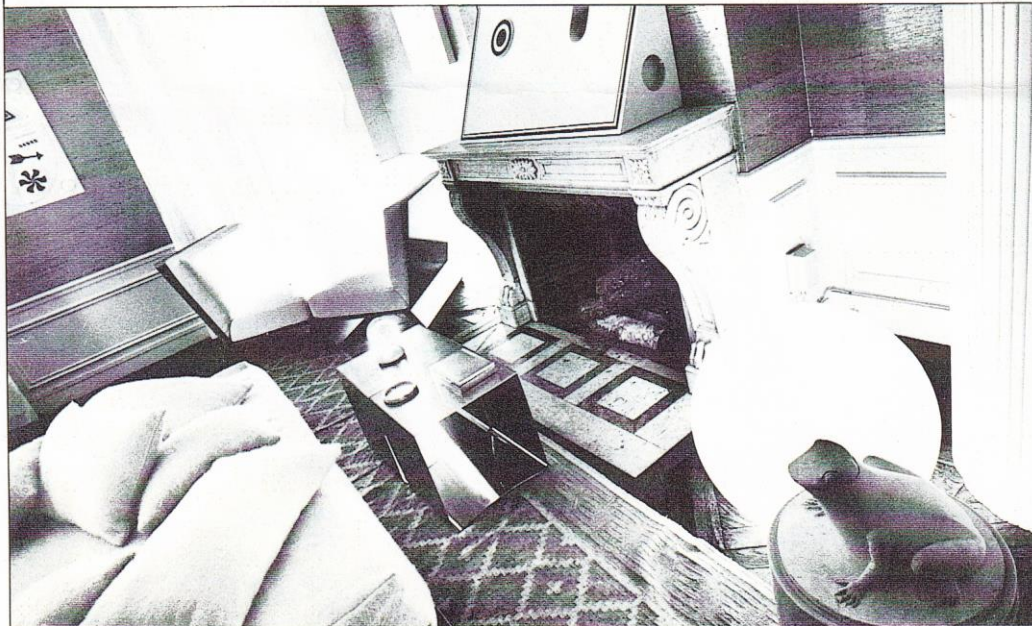


A DESIGNER'S APARTMENT



2

Karl Lagerfeld's professional talents are used by others. His models for coats, dresses, shoes and accessories are highly appreciated by Parisian ready-to-wear houses. Now he has applied his taste to clothe his own walls: those of an apartment with the ample proportions of a past era but handled in a style that might be tomorrow. In fact, some of the elements he has chosen are prototypes, not yet manufactured. Lagerfeld's apartment has high ceilings, sober mouldings and Versailles parquet floors. In this setting he has combined furniture found at antique shops with the most recent creations of Italian, Scandinavian and American designers. Some pieces were especially made for him from drawings by artists such as del Pezzo and François-Xavier Lalanne, or decorators like Martine Dufour. He has mingled colors that are both tender and aggressive: bright orange wallpaper for instance, and pastel-toned carpets. (See captions on page 43.)



3